

A woman with dark skin and her hair pulled back is bent over, working in a field of green plants. She is wearing a grey sleeveless dress with vibrant red and teal patterns. She holds a wooden tool, possibly a hoe or a hoe handle, which is partially buried in the soil. In the background, a large, dark, craggy rock formation rises steeply against a blue sky with scattered white clouds. The foreground is filled with bright green foliage, some of which is out of focus.

Climate Change Adaptation

How Mercy Corps is Pioneering
Climate Adaptation in Fragile and
Conflict Affected Situations

Climate Change Adaptation at Mercy Corps

Introductions



Sarah Knight

Senior Advisor, Climate and Environment



Simon Mercer

Director of Research, Climate Change

Agenda

- › Introduction to Climate Change at Mercy Corps
- › Focus on Climate Change Adaptation in FCS
- › ASAL Adapts
- › Q&A

Technical Support for Climate at Mercy Corps



Build our climate IQ

Increase opportunities for all team members to increase climate change knowledge and attract new climate-smart talent.



Enable climate action across our portfolio

Ensure climate risk informs all programs and to create a practical vision for climate action and impact within MC country strategies.



Expand our funding base for impact at scale

Develop innovative strategies to reach more people, increase funding from new climate donors for climate programs, and explore new types of partnerships



Engage and influence the global climate movement

Share program evidence, insights, and policy recommendations in national, regional, and global forums to increase our visibility and influence global climate policy and practice.

Research & Learning at Mercy Corps



EXPLORATORY

- How is climate change affecting conflict, livelihoods and the environment currently?
- How will this change in the coming years?
- Who and where will be most impacted?



EVALUATIVE

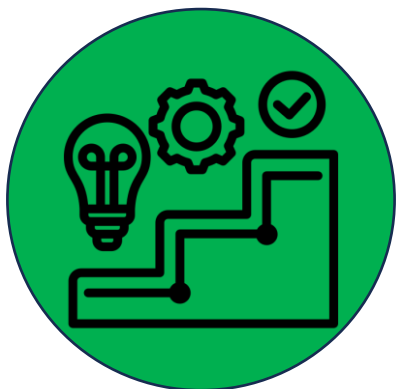
- What works to reduce the impacts of climate change on conflict, livelihoods, the environment?
- To improve these outcomes in the face of climate change?
- What approaches are scalable?



POLICY

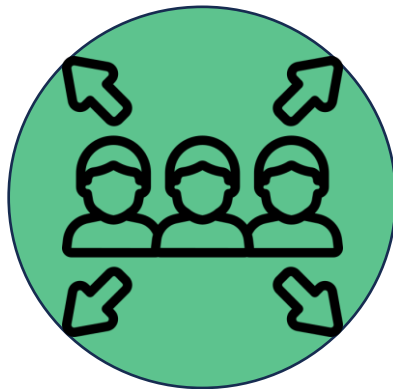
- What are the institutional barriers to more and smarter donor investments in climate change adaptation?
- What conducive policies and funding are needed?

To what ends?



Improve Programs

Better understand the consequences of inaction and address climate impacts on a range of sectors.



Scale What Works

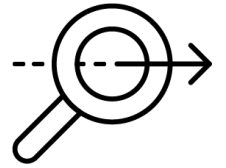
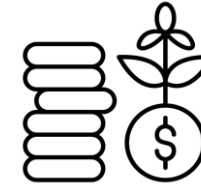
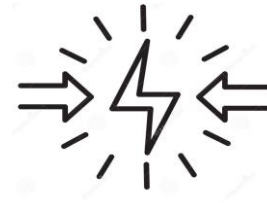
Strengthen the evidence base to ensure effective adaptation spending & evidence-based MC programming at scale.



Influence Others

Support effective advocacy and influencing on adaptation finance.

Priority themes



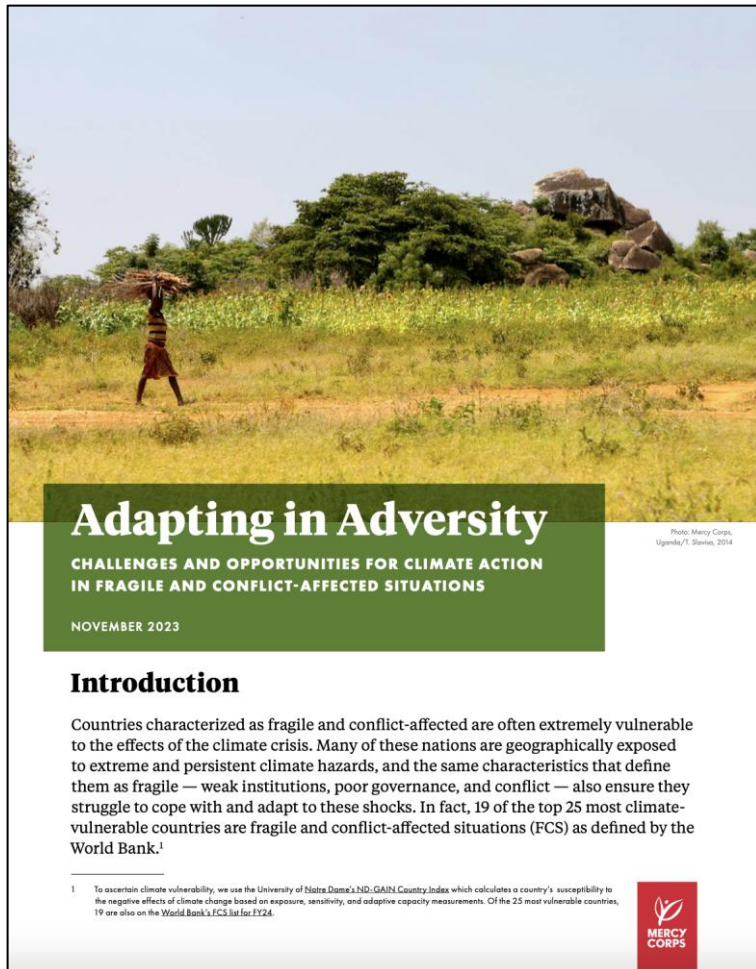
1. Climate Change and Conflict: What works to reduce climate-related conflicts that also strengthens communities' adaptation or resilience to climate shocks?

2. Climate Change and Livelihoods: What climate adaptation programs and policies protect and improve livelihood and economic outcomes?

3. Climate Change and Environment: What interventions and supportive policies can produce co-benefits to economic and environmental outcomes?

4. Methodological & Measurement Innovations on CC Adaptation: How can we best measure adaptation outcomes at a range of levels (individual, household, community, systemic)?

Background & Motivation



- Over a ¼ of the world's population is expected to be living in fragile contexts by 2030.
- Yet, the 10 most fragile states, only received a total of \$223 million in climate adaptation finance in 2021 – less than 1% of total global adaptation finance.
- This report was intended to help make the case that investments in climate resilience is effective, even in the face of unique barriers.

Adapting in Adversity

Adapting in Adversity Approach

- › Rapid review of experiences of Mercy Corps Programs working in FCS
- › Review of academic and grey literature
- › Online survey to relevant country offices
- › Interviews with staff of relevant programs



Barriers to Adaptation in FCS

Key Findings



› Governance



› Technical Capacity



› Funding



› Complexity



› Private Sector



› Short-Termism



› Economic Environment



› Evidence

Emerging Lessons & Solutions to Adaptation in FCS



› Adaptation is not only possible but effective in FCS



› Programs must be designed to allow teams to test & adapt to climate-conflict dynamics



› CCA must incorporate peace & governance interventions



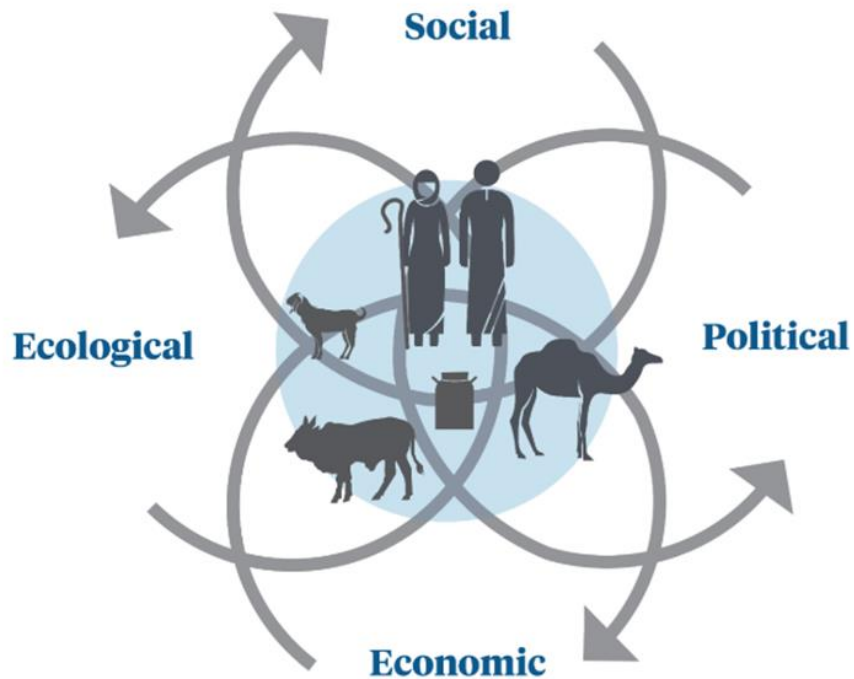
› Private sector solutions can work in FCS



› Access to Information supports improved decision making, policy & planning

Transformational Adaptation in Fragile Place

Dryland Food System: Livestock productive system



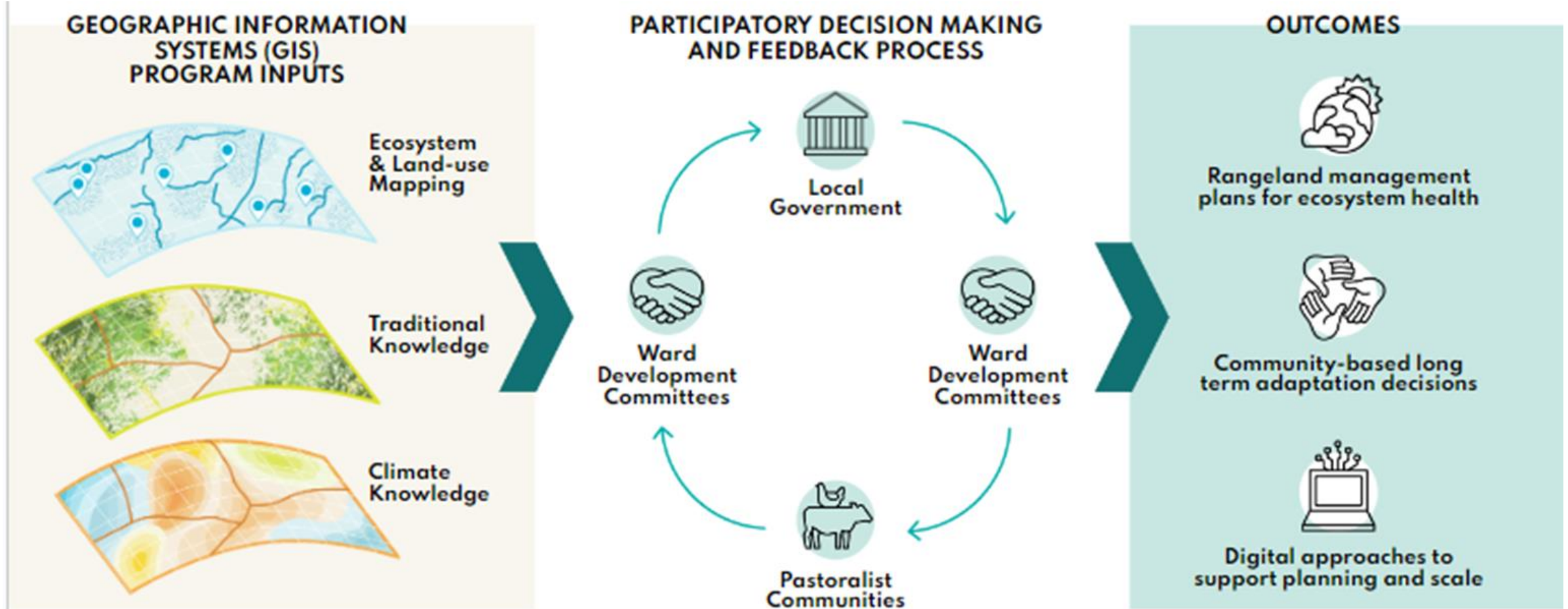
Livestock production systems are **interconnected** and **interdependent** relationships between livestock and humans as well as the social, ecological, political and economic systems in which they reside and operate.



"Transformation adaptation for dryland food system is where adaptation actions look at differentiated vulnerability and can shift ecological, economic, political and social systems **sympiotically** and at scale but for which these actions are proven to **support last mile individuals**" (a working definition)

Behaviour, environment and planning...

ASAL Adapts (Adaptation Services for Action and Learning)



Enhance long term decision making through an ecosystem-based adaptation (EbA) lens, thus incentivise ecosystem regeneration as linked to the needs of those who depend on a healthy production base for their lives and livelihood.

Transformational Adaptation in Fragile Places

...and immediate needs

A Pathway to Sustainable Reductions in Acute Malnutrition

Access to nutritious diverse food throughout the year (incl. in times of shocks & stresses)

Education, Life Skills & HH Resilient Livelihood opportunities

Consistent Access to Water and WASH services

Transformative Gender & Social Norms that Enable her Agency

KAP on Health & Nutrition & access and ability to utilize services



NASIEKU Adolescent Girl:
15-year-old student living with her pastoralist family and caring for 3 siblings in Samburu

Agency for decision-making, involvement in governance systems

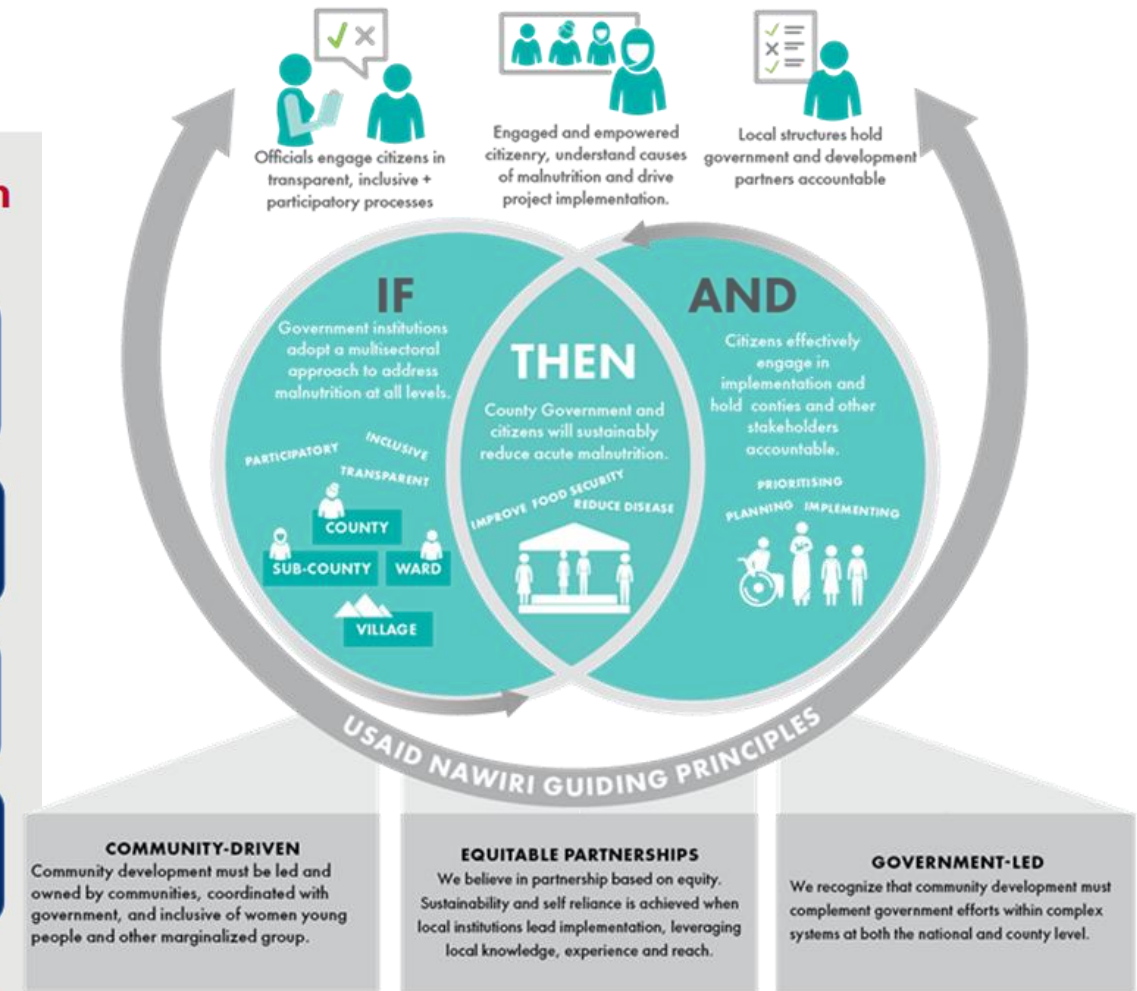
Agency over her sexual & reproductive health

Sustainably Managed Natural Ecosystem Services

Safe, Secure, & Nurturing Environment (Conflict Management)

Government, private and civil society actors prioritize and integrate adolescent health and nutrition in planning and budgeting and provide a responsive and inclusive enabling environment, and contextually relevant nutrition services

USAID Nawiri: Vision For Sustainable Change



"Transformation adaptation for dryland food **system** is where adaptation actions look at differentiated vulnerability and can shift ecological, economic, political and social systems **symbiotically** and at scale but for which these actions are proven to **support last mile individuals**" (a working definition)

- No singular programme
- Support on evidence, learning and monitoring (time)
- Leave no one behind

A photograph showing a Mercy Corps staff member, a woman in a light-colored vest with the organization's logo, holding a clipboard and pen, engaged in an interview with a group of people. The group includes men, women, and children of various ages, standing outdoors in a rural setting. In the background, another staff member is visible, talking on a mobile phone and holding a notebook. The scene is brightly lit, suggesting daytime.

Question & Reflections

Next Steps

- › Research series to examine the complex and context specific relationships between peacebuilding and climate change interventions and results to
 - › Identify concrete examples and generate evidence
 - › Support improved decision making by teams
 - › To support advocacy and comms
- › Identifying opportunities for wider collaboration & influencing
 - › Improving internal MEL systems to properly capture adaptation and maladaptation risks in all our programmes
 - › Series of climate-conflict nexus projects with new screening tool
 - › Advancing Anticipatory Action approach



Climate Change Adaptation at Mercy Corps

Back and forth Q&A

Sharing your Experiences of Adaptation and FCS

Questions for us?

Questions for discussion:

- How does adapting in adversity and the example presented today resonate with your experience in this field?
- What good programme or research examples can you share with us?
- Similarities, differences, reflections on barriers and how they can be overcome?
- Key lessons from your work in this area? What solutions or partnerships are we missing?
- Experience of dealing with trade-offs in adaptation?
- Opportunities for collaboration?





THANK YOU!



Simon Mercer - Director Climate Research smercer@mercy Corps.org

Sarah Knight – Senior Advisor, Climate and Environment
sknight@mercy Corps.org