

# Dairy for Nature & Farmers

---

HOW DO WE ACHIEVE IT, AND HOW DO WE  
MEASURE IT?

Beth Bridge  
Alfy Gathorne-Hardy





# £394M



£3.2  
BILLION

£0.394  
BILLION

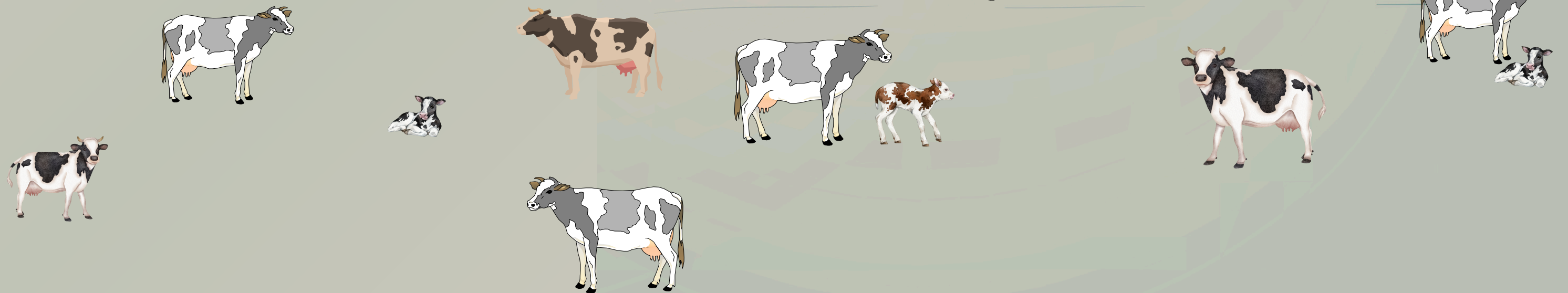








**-98% OF  
SPECIES  
RICH  
GRASSLAND**

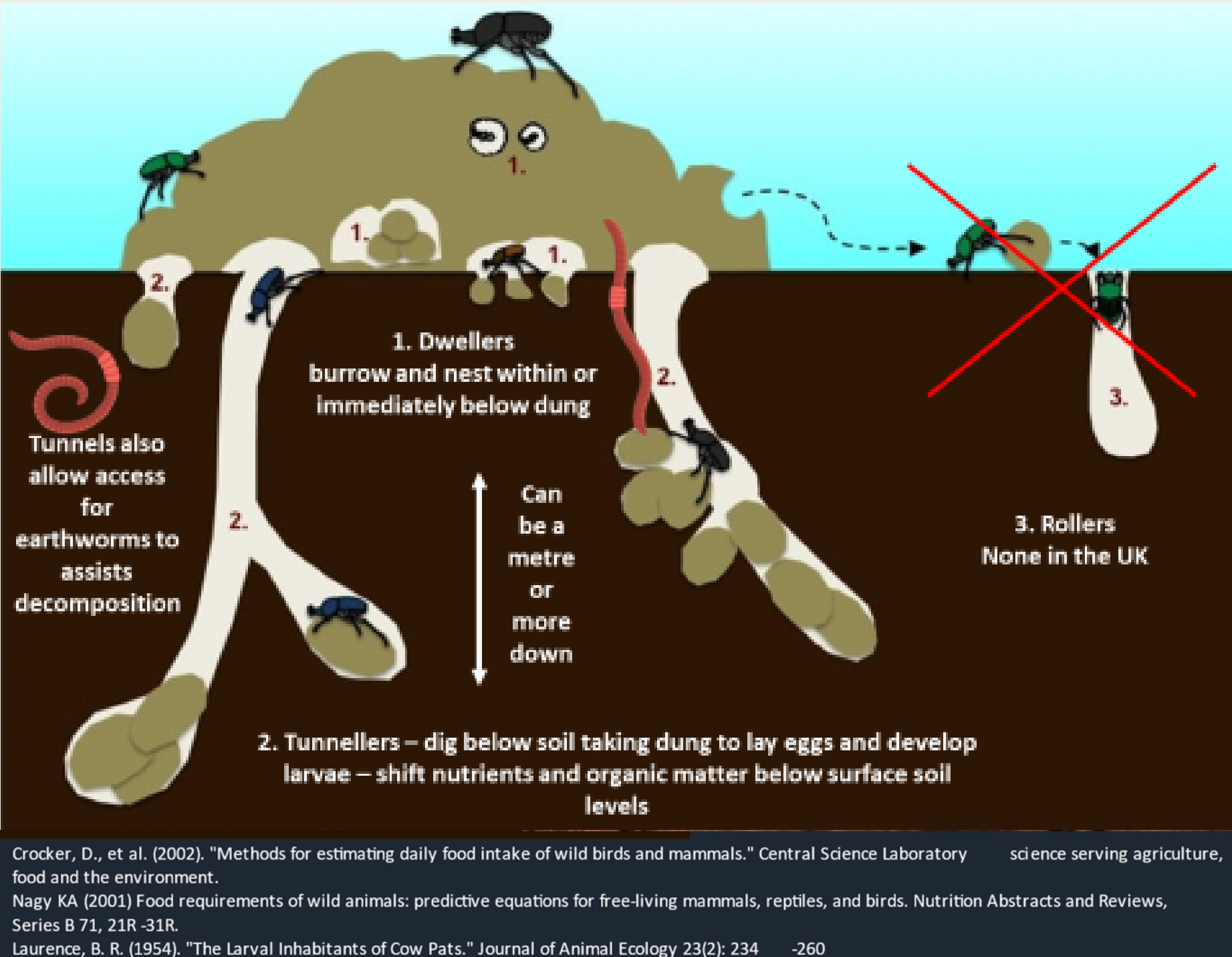




# AGROECOLOGICAL INTERVENTIONS ARE OFTEN UNPOPULAR WITH FARMERS & DIFFICULT TO EVALUATE



# SwalloWs from Cow Dung



Dung production (% of cow weight)	5.02
Conversion of dung mass to larval mass	1.25
Cow weight (kg)	700
Daily dung production (kg)	35
Annual dung production (kg)	12,826
Annual larva production (kg)	160
Conversion larvae to imago (ratio)	0.92
Annual production adult insects/cow (kg)	147
Crcocker, D., et al., (200) SwalloWs per cow	32.04
Nagy K.A. (2001) SwalloWs per cow	27.07



# INCREASE IN BAT ACTIVITY (TIME SPENT BY BATS) COMPARED TO FIELD 1



12



4



1

NO RECENT COW ACTIVITY

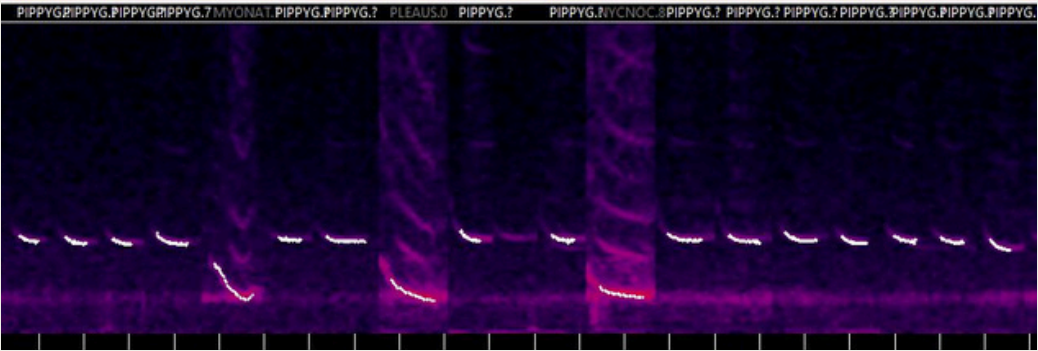
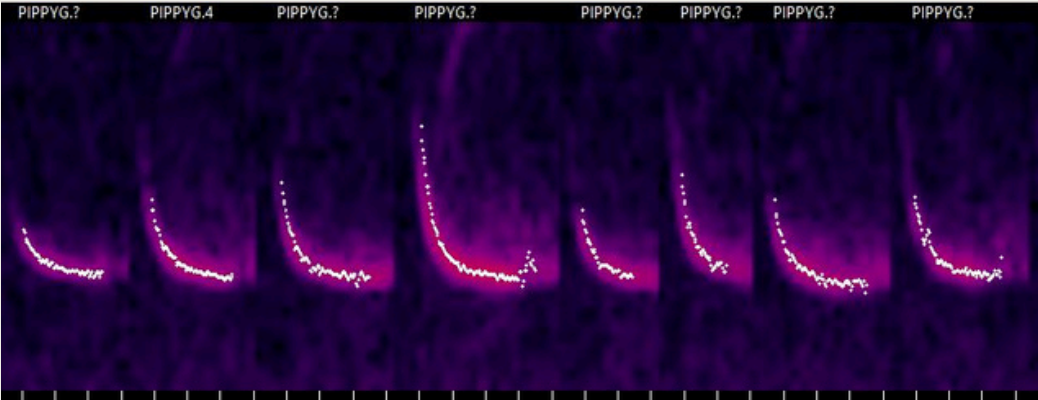
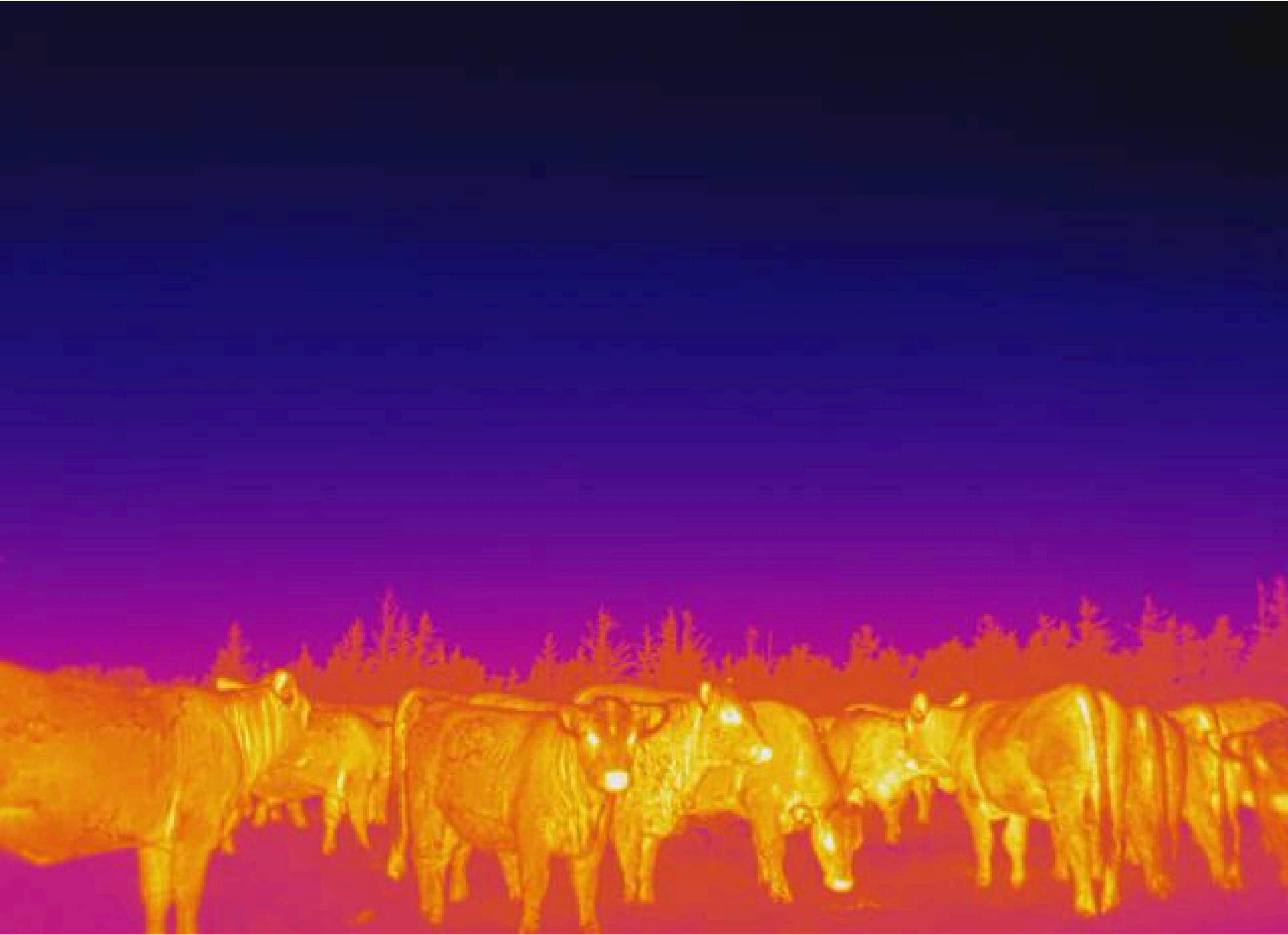
2

COWS PRESENT

3

4 DAYS SINCE COWS

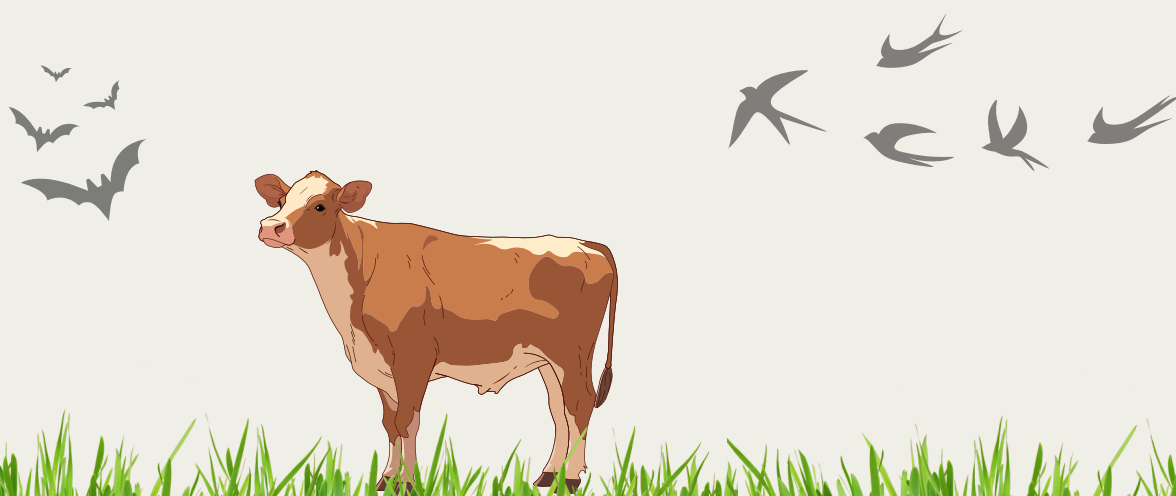




**BATS FEED OVER COWS: WHAT ELSE  
COULD/SHOULD WE MEASURE?**

**FARMER ACCEPTABILITY: WILL THIS WORK FOR  
THEM - YIELD/PRACTICABILITY/PROFIT?**

**BETH.BRIDGE@SRUC.AC.UK  
A.GATHORNE-HARDY@ED.AC.UK**



Thank you to Simon Gibson-Poole for lending us his thermal camera, and to Harry Vincent & The Free Company for letting us film their lovely cows